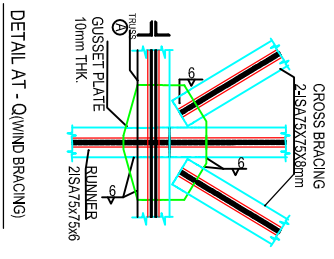
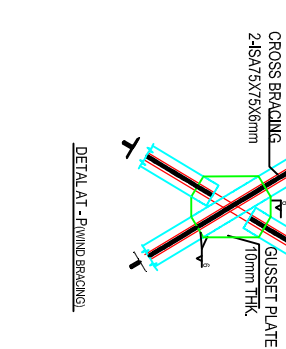
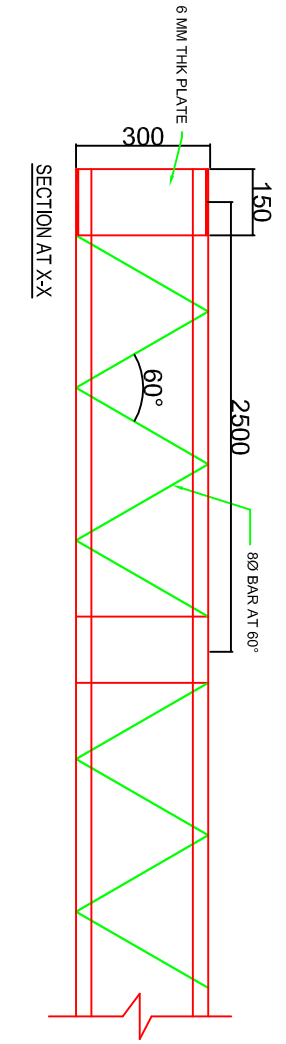
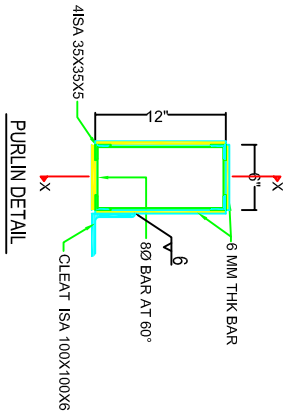


CEILING PLAN SHOWING
ARRANGEMENT OF PURLINS
ARRANGEMENT OF RUNNER &
WINDBRACING



NOTES

1. DIMENSIONS ARE TO BE READ & NOT TO BE SCALED OFF.
2. ALL DIMENSIONS ARE IN mm.
3. CODES & SPECIFICATIONS :
 - i) STRUCTURE STEEL SHALL CONFORM TO IS 228.
 - ii) WELDING SHALL CONFORM TO IS 818.
 - iii) FABRICATION & ERECTION SHALL IN ACCORDANCE TO IS 800
4. COLUMNS SHOULD HAVE FULL BEARING GUSSET PLATES
5. WELDS ARE TO BE GRIND SMOOTH WHERE SHOWN OR REQUIRED
6. ALL WELDS ARE 6 mm THK, UNLESS NOTED OTHERWISE.
7. PAINTING : ONE COAT OF PRIMER PAINT OF APPROVED COLOUR & QUALITY AT SHOP & SECOND COAT OF THE SAME PRIMER PAINT AFTER ERECTION & FOLLOWED BY TWO COATS OF PAINT OF APPROVED COLOUR.
8. PROCEDURE FOR WELDING :
 - i) TACK BEADING @ 300 mm
 - ii) INTERMITTENT WELDING FOR 150 mm STRETCH
 - iii) COMPLETE BALANCE WELDING TO MAKE IT CONTINUOUS
9. ALL GUSSET PLATES SHOULD BE 10mm THK.

GENERAL COMMENTS
CONFIDENTIAL

PROJECT
SOLAR EVAPORATION POND

CLEAR
CONFIDENTIAL

STRUCTURE

PLAN SHOWING RUNNERS & BRACINGS
PLAN SHOWING PURLINS
DETAIL - P & DETAIL - Q

ENGINEER
DRAWN BY : AMARDEEP SINGH

SCALE : N.T.S.

DATE : 26/11/2004 DRG. NO. : S3