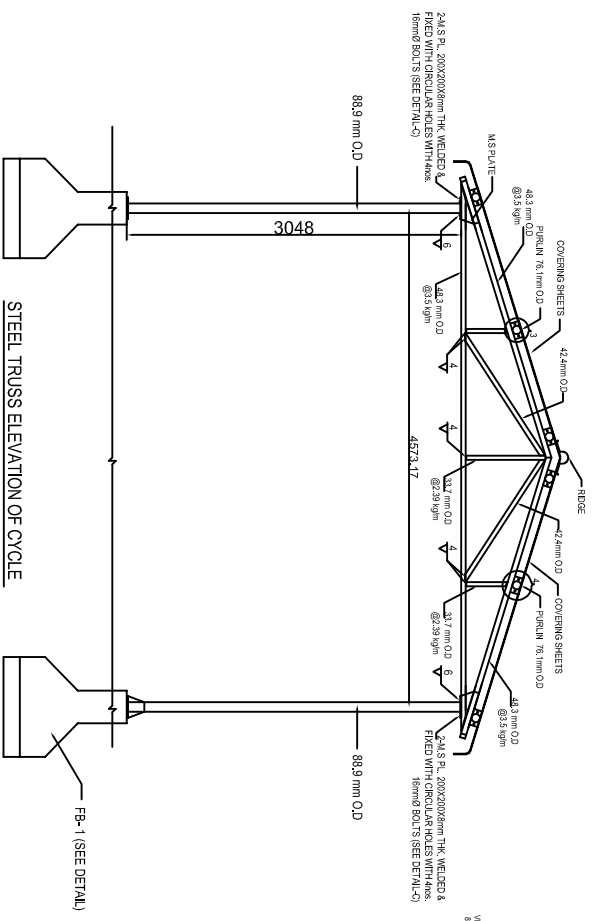
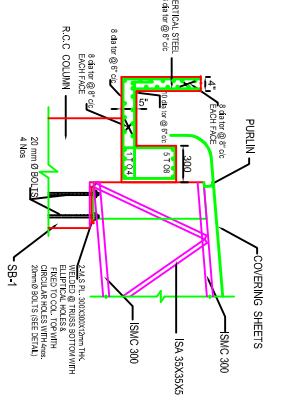


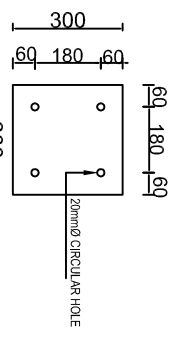
STEEL TRUSS ELEVATION OF SHED OF PRODUCTION AREA



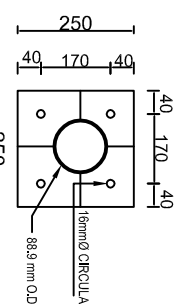
STEEL TRUSS ELEVATION OF CYCLE SHED



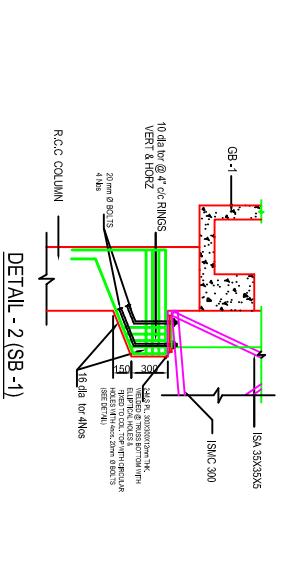
DETAIL - 1 (GB - 1)



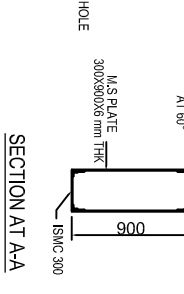
DETAIL - A (M.S PLATE)



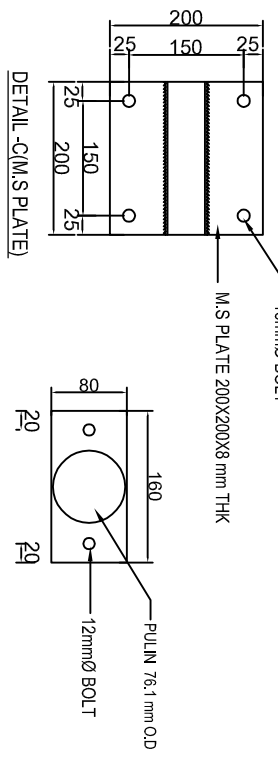
DETAIL - B (M.S PLATE)



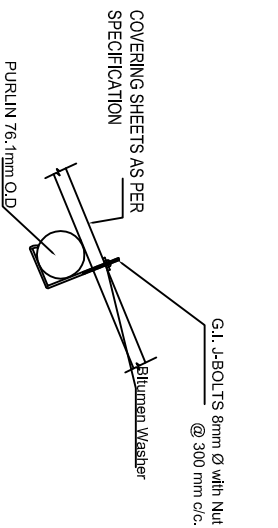
DETAIL - 2 (SB - 1)



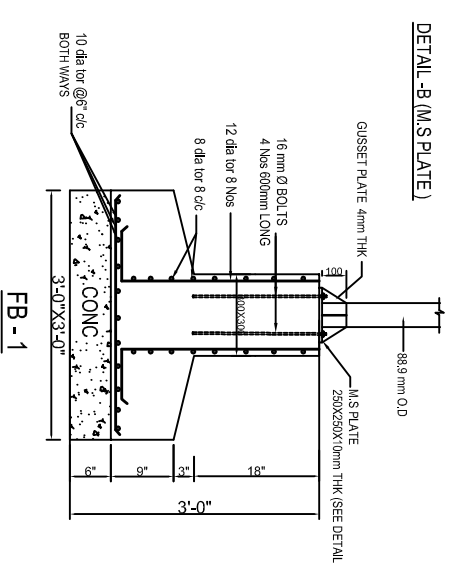
SECTION AT AAA



DETAIL - C (M.S PLATE)



DETAIL - 4



FB - 1

NOTES

1. DIMENSIONS ARE TO BE RECHECKED TO BE SCALED OFF.
2. ALL DIMENSIONS ARE IN MM.
3. CODE & SPECIFICATION:
4. COLUMN SHOULD HAVE FULL BEARING ON BASE PLATES.
5. ALL WELDS ARE 6 mm. THK. UNLESS NOTED OTHERWISE.
6. PAINTING : ONE COAT OF PRIMER PAINT OF APPROVED COLOUR & QUALITY AT SHOP & SECOND COAT OF THE SAME PRIMER PAINT AFTER ERECTION TO BE FOLLOWED BY TWO COATS OF PAINT OF APPROVED COLOUR.
7. PROCEEDURE FOR WELDING:
8. FACED ELEVATION @ 300 mm.
9. IN BRACKET WELDING FOR 90 DEG. SHEAR.
10. COMPLETE BALANCE WELDING TO WELT COMMUNIS.

DESIGNED BY:	SYAL & ASSOCIATES
PROJECT:	F-91, PHASE - VIII
INDUSTRIAL AREA	MOHALI PH(268219)
CLIENT:	SABOO & COATINGS L.T.D
DETAILED BY:	DEVA BASSI (P.B)
PROJECT NO.:	
DATE:	09/01/2005
SCALE:	
ENGINEER:	RAJIV SYAL
DRAWN BY:	ANARDEEP SINGH
DATE:	09/01/2005
DRG. NO.:	