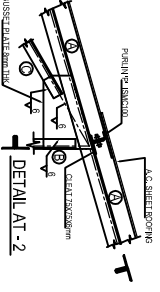


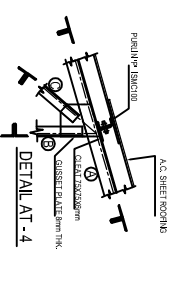
STEEL TRUSS ELEVATION

A	= 215A 75X75 @ 8.8kg/m
B	= 215A 75X75 @ 8.8kg/m
C	CROSS BRACING = 215A 75X75 @ 8.8kg/m
PURLINS TP	= ISMC 100 @ 9.2kg/m
RUNNERS RR	= ISMC 100 @ 9.2kg/m
CLEAT ANGLE	= ISA 75X75 @ 8.8kg/m

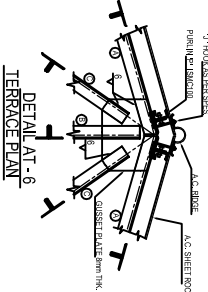
NOTE: ALL GUSSET PLATES SHOULD BE 8mm THK.



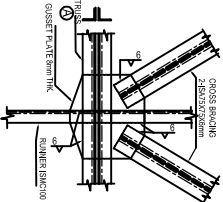
DETAIL AT -2



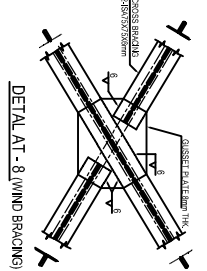
DETAIL AT -4



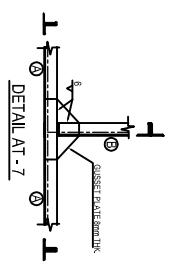
DETAIL AT -6
TERRACE PLAN



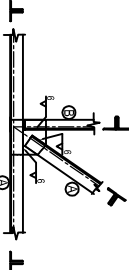
DETAIL AT -9 (WIND BRACING)



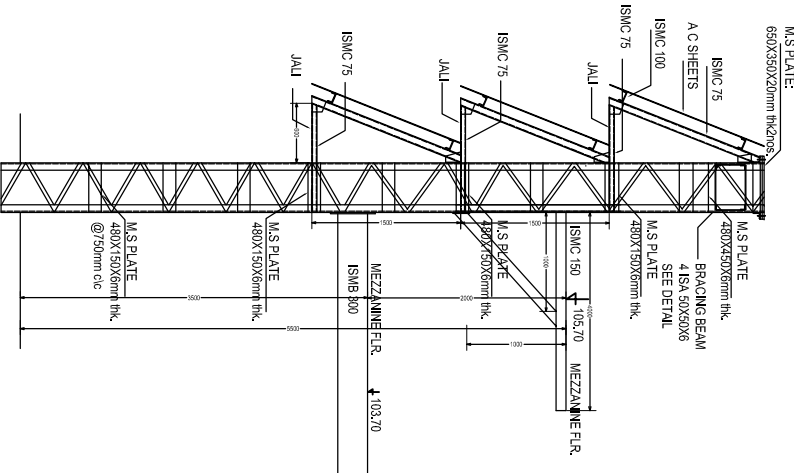
DETAIL AT -8 (WIND BRACING)



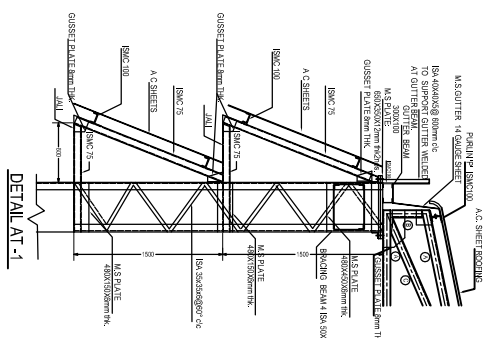
DETAIL AT -5



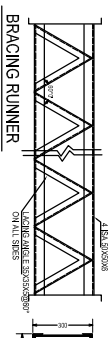
DETAIL AT -3



COL C-1



DETAIL AT -1



BRACING RUNNER

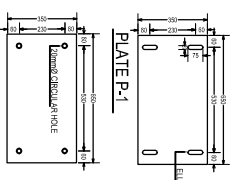


PLATE P-1

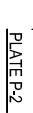
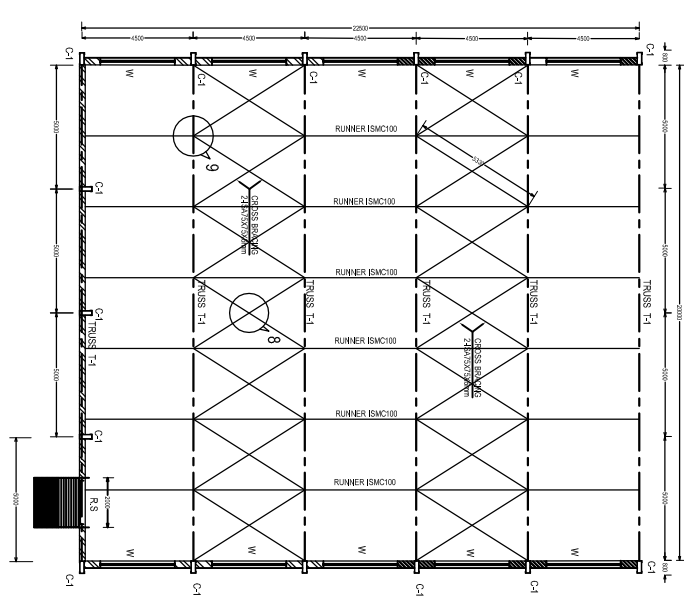


PLATE P-2



PLAN SHOWING RUNNERS & WIND BRACINGS

NOTES

1. DIMENSIONS ARE TO BE READ & NOT TO BE SCALED OFF.
2. ALL DIMENSIONS ARE IN MM.
3. CODES & SPECIFICATIONS:
 - i) STRUCTURAL STEEL SHALL CONFORM TO IS 226.
 - ii) WELDING SHALL CONFORM TO IS 818.
 - iii) FABRICATION & ERECTION SHALL IN ACCORDANCE TO IS 800.
4. COLLUMS SHOULD HAVE FULL BEARING ON BASE PLATES.
5. ALL WELDS ARE TO BE GRIND SMOOTH WHERE SHOWN OR REQUIRED.
6. ALL WELDS ARE 6 mm. THK. UNLESS NOTED OTHERWISE.
7. PAINTING : ONE COAT OF PRIMER PAINT OF APPROVED COLOUR & QUALITY AT SHOP & SECOND COAT OF THE SAME PRIMER PAINT AFTER ERECTION & FOLLOWED BY TWO COATS OF PAINT OF APPROVED COLOUR.
8. PROCEEDURE FOR WELDING:
 - i) TACK WELDING @ 50mm.
 - ii) FINISH WELDING FOR 100 mm. STRENGTH.
 - iii) COMPLETE BALANCE WELDING TO WELDED JOINTS.

CONFIDENTIAL

UTILITY BLOCK
STRUCTURE

ELEVATION OF TRUSS
PLAN SHOWING RUNNERS & WIND BRACINGS
DETAIL 1 TO DETAIL 9

ENGINEER: CONFIDENTIAL
DRAWN BY: BHARATI VERMA
SCALE:
DATE: 28/06/2003 DRG. NO. : S-3